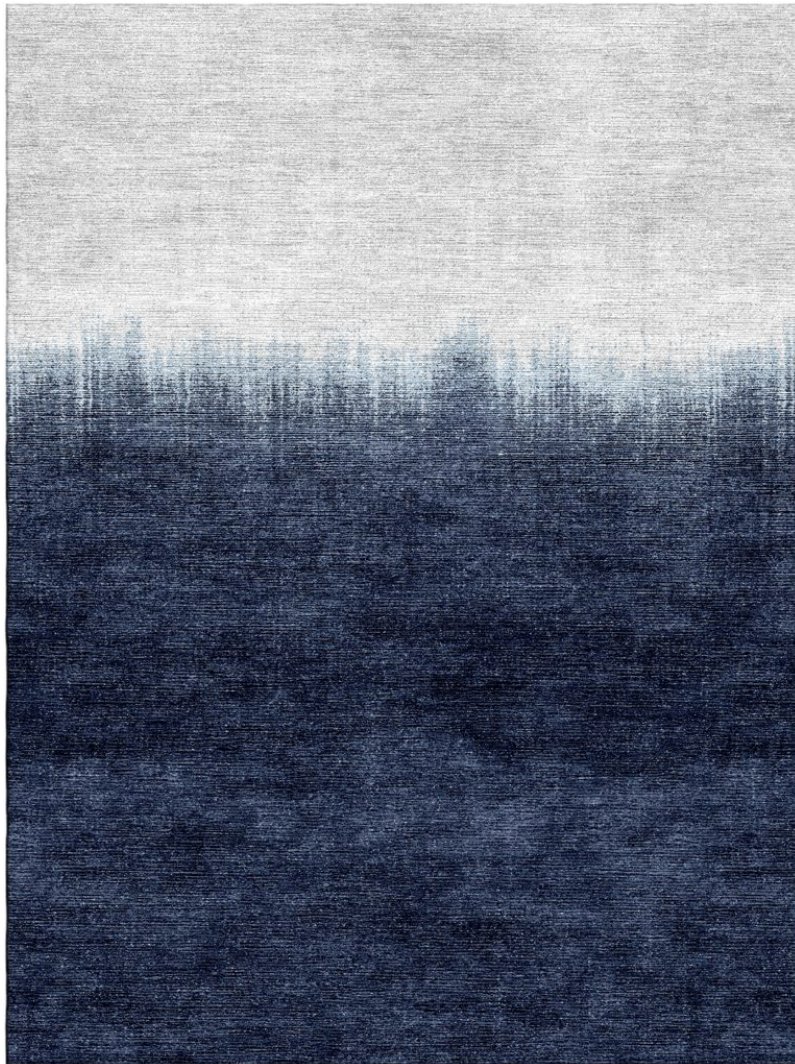


# P E R E N N I A L S

---



## Blue Jean

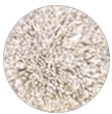
### Take The Plunge Tibetan Knot

TK357-501

#### DETAILS & SPECS

|              |              |
|--------------|--------------|
| Designer     | Studio       |
| Construction | Tibetan Knot |
| Colorway     | Blue Jean    |
| Collection   | 2017 B Fall  |

#### Pom Colors



188



129



284

---

#### DESCRIPTION

Hand knotted, 80 knots per square inch.